

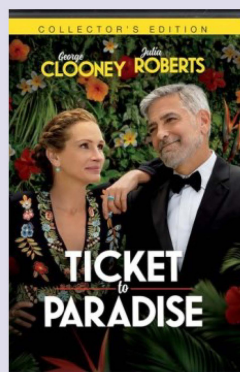
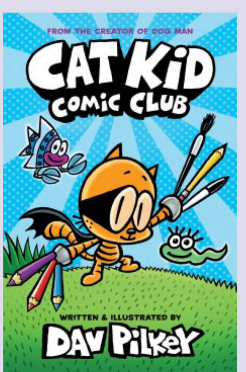
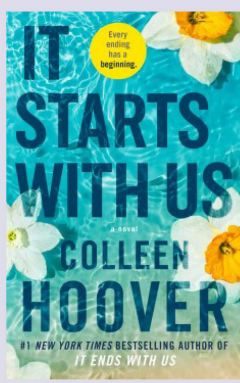
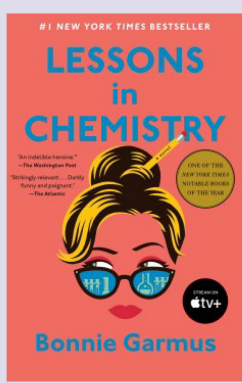
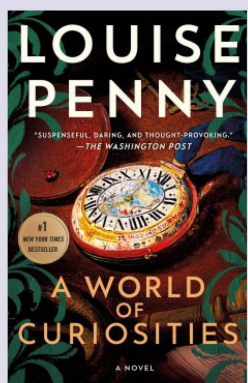
# Guelph Public Library

## 2023 | Year in Review

### Top Highlights

- ▶ New Central Library Ground Breaking
- ▶ Friends of the Guelph Public Library donate \$1 million dollars to fundraising campaign
- ▶ Project lead on Guelph Wellington Digital Equity Coalition (GWDEC)
- ▶ Established new partnerships with Nightingale Centre, Ontario Caregivers Organization and The Womb

### Top Check Outs



### Library Events



**1,294**  
Events

**25,954**  
Program  
Attendees

### Types of Events Offered in 2023:

**50%**

Early Literacy Development

**25.9%**

Social and Community Connections

**19.1%**

Educational and Learning Activities

**5%**

Health and Wellness Programs

## 1.99 Million Library Visitors

### Did You Know?

The number of visitors to our library locations and website would fill both the River Run and Sleeman Centre to capacity just over 326 times.



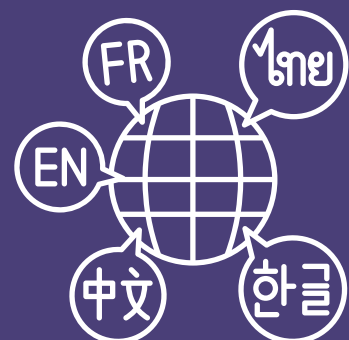
# Guelph Public Library

## 2023 | Year in Review

### By the Numbers



**8,454**  
New  
Cardholders  
(+16.6%)

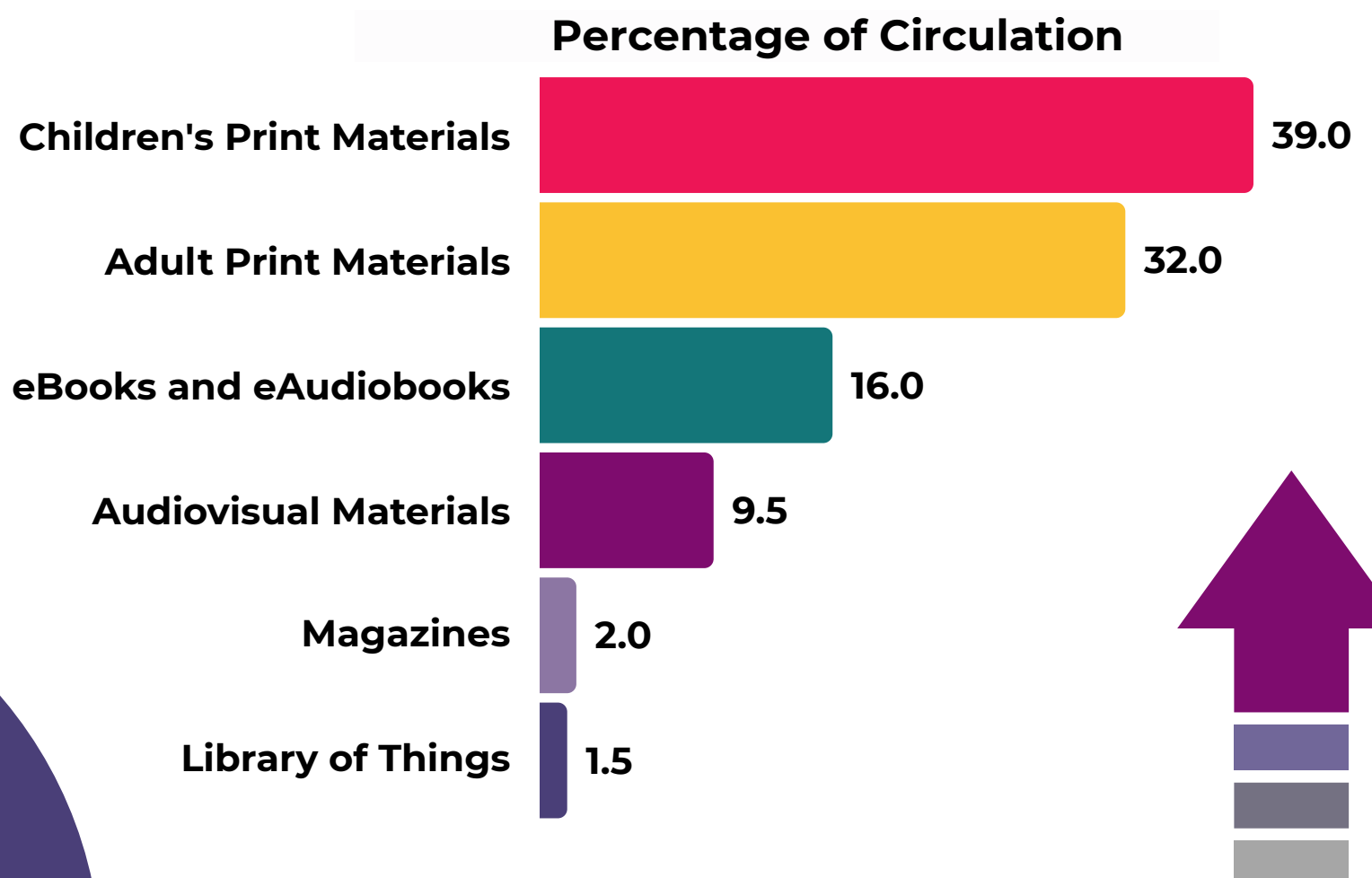


#### Did you know?

The library offers materials in **over 30 languages** including French and English.

**2.23 Million**  
Items Checked Out

On average, **6,308 items** were checked out **each day**.



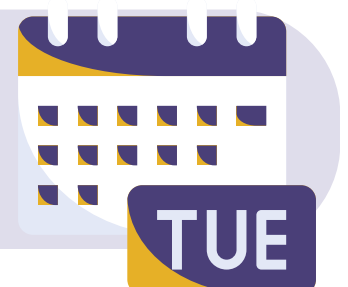
**39.0%**

Of our circulation is from children's print materials.



Busiest day of 2023 was **April 6** with **8,766 items** checked out.

Busiest day of the week was **Tuesdays**.



### Technology Use

**1.57 Million**

Includes: in-library computers and devices, Wi-Fi sessions plus online resources usage.



**Makerspace**  
Guelph Public Library

**3,276**  
people

used this space to discover, experiment and create in 2023.